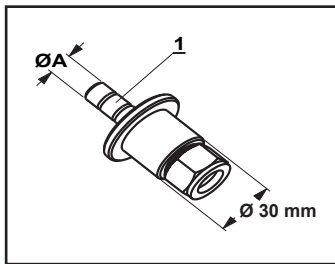


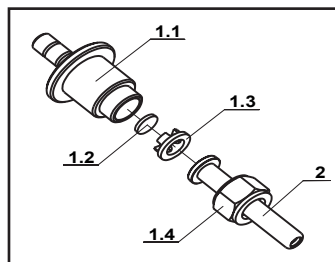
FILLING NOZZLE

– WITH NON-DRIP VALVE

- For filling from 25 ml to 2000 ml
- Prevents dripping between fills
- Valve activated by 'reverse function' on Watson-Marlow Flexicon filler
- Easy to clean
- Fits nozzle holder supplied with PF22, GF30, DF32 and filling stand 81-200-050 + 81-200-000

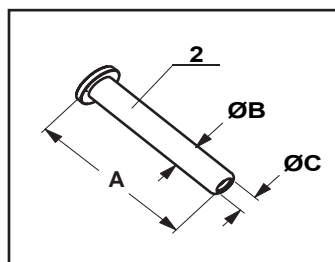


1 SPECIFICATIONS				
Materials	AISI316			
	A (OD)	B (ID)	Fill volumes from	Part number
Dimensions in mm	Ø 8.5 Ø12.0 Ø15.0	Ø 6.0 Ø 8.0 Ø10.0	25.0 ml 100,0 ml 150.0 ml	30-200-085 30-200-120 30-200-150



Filling head is supplied together with 1.2 + 1.3 + 1.4

Position	Part number
1.2 - Nitrile rubber valve plate	30-200-086
1.2 A - PTFE (Teflon) valve plate	30-200-084
1.3 - PTFE (Teflon) valve insert	30-200-082
1.4 - Nut	30-200-010



2 SPECIFICATIONS					
Materials	AISI316				
	A	B(OD)	C (ID)	Fill volumes from	Part number
Dimensions in mm	75 75 75 35 75	8 10 12 15 16	5 7 9 10 12	25.0 ml 50,0 ml 150.0 ml 150.0 ml 300.0 ml	30-210-050 30-210-070 30-210-090 30-210-091 32-210-120
With net at tip of nozzle prevents dripping when filling oil	75 75	12 16	8 11	100.0 ml 300.0 ml	30-215-080 30-215-110

Please order item 1 and 2