

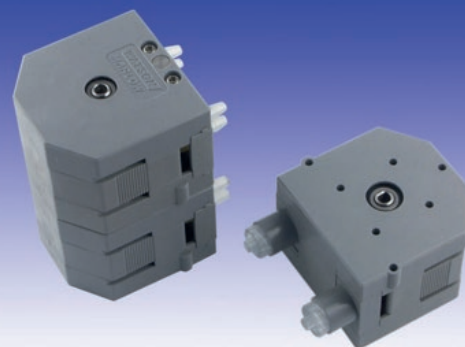
400/M, N single and multi channel pumpheads

400 series

Watson-Marlow Pumps

FEATURES AND BENEFITS

- Robust and compact design (50 x 50mm)
- Completely closed, yet easy to use
- Tube elements makes the tube loading quick and trouble free
- Tube elements in Bioprene, silicone and peristaltic PVC
- Available in chemical resistant material
- Double rubber sealed ball bearings
- Stacked versions offers up to 8 channels



Watson-Marlow... Innovation in Full Flow

PERFORMANCE

Bioprene tubing, 1.6mm wall
Zero pressure and no suction height

Flow rates 400/M		
Tube bore (mm)	ml/rev	Max cont. flow
1.6	0.13	65 ml/min
2.4	0.26	130 ml/min
3.2	0.41	200 ml/min
4	0.52	260 ml/min

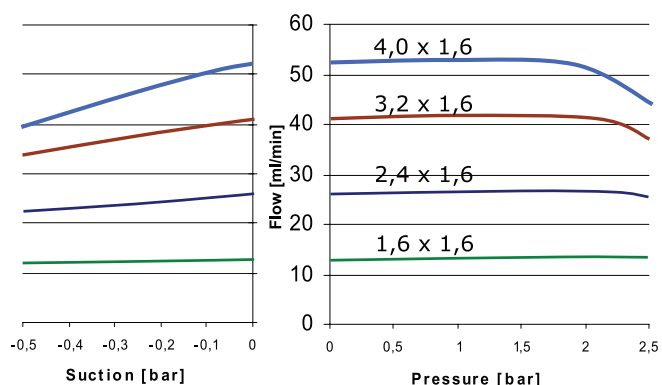
Bioprene tubing, 1.0mm wall
Zero pressure and no suction height

Flow rates 400/N		
Tube bore (mm)	ml/rev	Max cont. flow
0.5	0.013	7 ml/min
1	0.05	25 ml/min
2	0.18	90 ml/min
3	0.33	150 ml/min

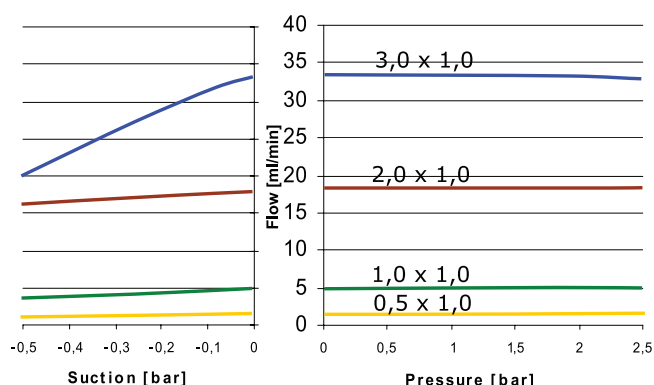
All flow figures are nominal and may vary due to tube tolerances

All flow figures are nominal and may vary due to tube tolerances

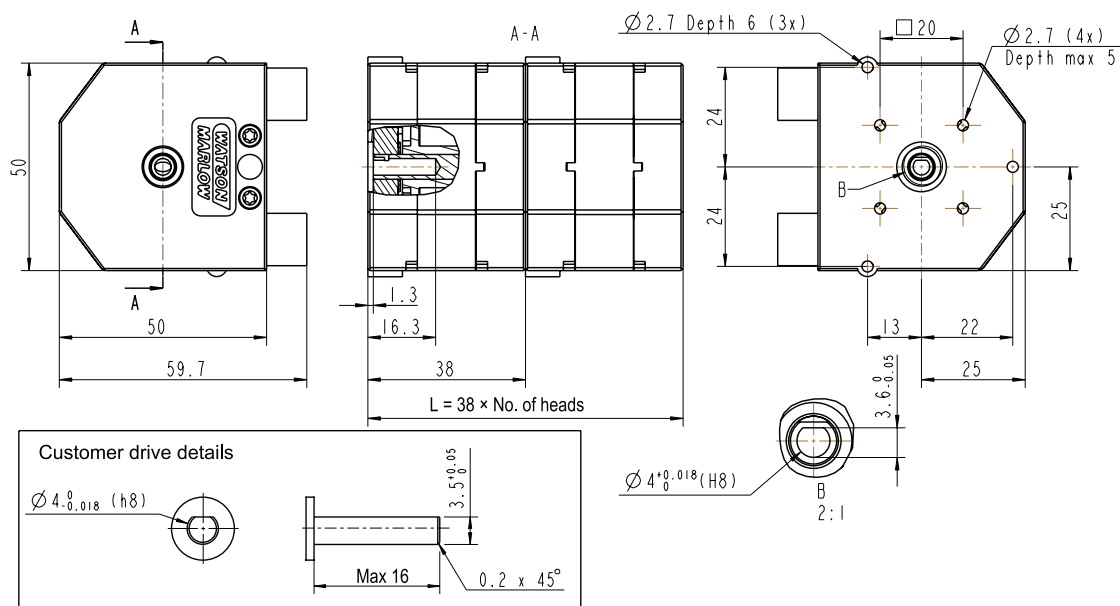
400/M
Pressure / suction charts
Santoprene tubing @100rpm



400/N
Pressure / suction charts
Santoprene tubing @100rpm



DIMENSIONS



All dimensions in mm

TECHNICAL SPECIFICATION

	M1	N2-N4
Tubing	1.6-4.0mm ID, continuous or element	0.5-3.0mm ID, continuous or element
Recommended use	Continuous or intermittent	Continuous or intermittent
Operation	CW and CCW	CW and CCW
Max speed	350rpm	200rpm
Operating temperature	-10C to +45 C	-10C to +45 C

MATERIALS OF CONSTRUCTION

	Standard	PVDF
Pump house	Acetal (Grey)*	PVDF
Rotor	Acetal (Black)	PVDF
Rollers	Acetal (Black)	PVDF
Track	Acetal (Grey)*	PVDF
Shafts	Stainless steel	Acid proof SS
Screws	Stainless steel	Stainless steel

*=Optional colours available

ORDER INFORMATION

400/M Product codes				
Channels	Req. torque, bioprene tubing	Req. torque, silicone tubing	Part code standard	Part code PVDF
1	150mNm	130mNm	043.001M.E1C	043.001M.E1P
2	270mNm	240mNm	043.001M.E2C	043.001M.E2P

400/N Product codes				
Channels	Req. torque, bioprene tubing	Req. torque, silicone tubing	Part code standard	Part code PVDF
1	250mNm	220mNm	043.001N.N2C	043.001N.N2P
2	450mNm	400mNm	043.001N.N4C	043.001N.N4P

All flow rates shown were obtained pumping water at 20C (68F) with zero suction and delivery heads. Watson-Marlow, Bioprene and Marprene are trademarks of Watson-Marlow Limited. Disclaimer: The information contained in this document is believed to be correct but Watson-Marlow Limited accepts no liability for any errors it contains, and reserves the right to alter specifications without notice. LoadSure is a trademark of Watson-Marlow Limited. © STA-PURE PFL and © STA-PURE PCS are registered trademarks of W.L Gore & Associates Inc. Please state the product code when ordering pumps and tubing.

**WATSON
MARLOW
Pumps**

wmftg.com
info@wmftg.com
+44 (0) 1326 370370